

Elkhorn Public Schools unites students, families, educators and the community to ensure a challenging and enriching academic environment that inspires students to develop the knowledge and skills necessary to become responsible citizens and lifelong learners.

Project Search: A Partnership to Strengthen Workforce Readiness Skills

During the upcoming school year, EPS will once again partner with Madonna Rehabilitation Hospital in Omaha to provide a transition from school to workplace for students with disabilities through Project Search. A yearlong program that occurs during the students' last year of eligibility for education services, Project Search provides students with training and education intended to assist them in developing the skills needed to find and maintain future employment within the community.



As part of the program, Project Search interns participate in varying activities including classroom instruction, career exploration, and hands-on training through workplace rotations. At Madonna Rehab Hospital, those rotations involve time spent in Environmental Services, Nutrition Services, Purchasing, and the Rehabilitation department. During their rotations, interns focus on building their employability skills such as taking instructions from both supervisors and peers, communicating with patients and coworkers, and general organization and customer service skills.



In the months leading up to graduation, students focus on securing employment, with guidance from the Nebraska Vocational Rehabilitation office. By this point, interns have further developed their skills and spent a year doing all of the things that any other employee would be doing, giving them a new confidence in themselves that carries over into their employment outside of Project Search.



Project Search is an international program model focused on employment for participants; currently, there are 16 Project Search programs throughout Nebraska. Madonna Project Search involves students from several area school districts, including Elkhorn, Gretna and Ralston.

Currently, Project Search is seeking local employers interested in partnering with the program to determine if a Project Search intern is a good fit for employment at their business. If you are interested in learning more about becoming a Project Search Employer Partner, please contact Andrea Street, EPS Project Search Instructor, at astreet@epsne.org.

Inside this Issue

- Names, Principals, Core Teams Announced for Newest Elementary and High School2**
- EPS Named "Best Community for Music Education"2**
- Back to School Information3**
- District Notices.....3**



Names, Principals, and Core Teaching Teams Set for Elementary and High School

In August of 2020, Elkhorn Public Schools will again expand its total student capacity with the opening of two new schools.

Woodbrook Elementary, the 12th elementary building for the District, will open its doors at 18520 Purple Martin Parkway, located near 186th and Ida streets. To aid in establishing and planning the new school, a core teaching team has been established, led by principal-elect Pam Wahl. The Core Team will work together through the coming year to begin creating the culture of Woodbrook Elementary.



Woodbrook Elementary Core Team, from left to right:
Front: Pam Wahl, Jessica Ritonya-Haskins, Julie Adamson, Troy Stoller
Back: Jillian Moore, Abby Smith, Vanessa Giesselmann

In addition, the District's 3rd high school, Elkhorn North (ENHS), located near 180th and Maple streets, will serve students in the District's northeastern-most quadrant. Principal-elect Dan Radicia, current principal at Elkhorn High School, will lead a core teaching team as they begin establishing a culture of rigorous excellence similar to that of the other EPS high schools for students attending Elkhorn North, home of the ENHS Wolves.



ENHS Core Team, from left to right:
Front: Teresa Huber, Jessica Ethridge, Lindsay Scott, Michelle Seger
Middle: Martha Dowd, Kendra Schneider, Abbie Lamb, Tomi Connelly, Dan Radicia
Back: Sam Stanley, Fred Doscher, Matt Rom, Luke Ford

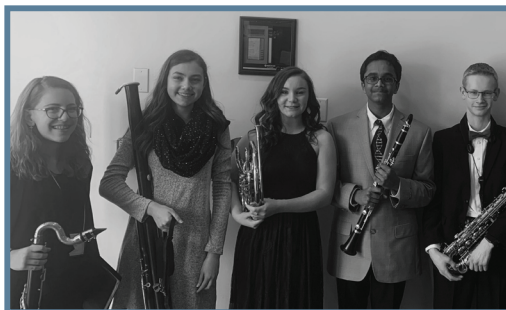
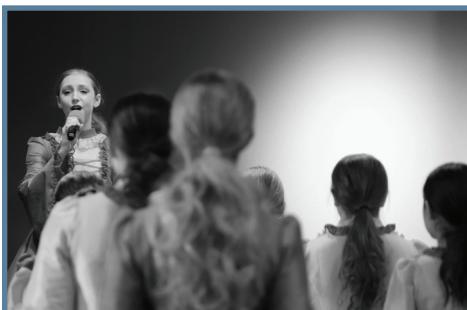
In June 2019, the EPS Board of Education approved assigned boundaries in response to the opening of Woodbrook Elementary, Elkhorn North High School, and Middle School #5, set to open in August 2021. Approved boundaries can be found at <https://www.elkhornweb.org>.

EPS Named "Best Community for Music Education"

For the second year in a row, EPS has been honored with a "Best Communities for Music Education" designation from The NAMM Foundation for its outstanding commitment to music education. The designation is awarded to districts demonstrating outstanding achievement in efforts to provide music access and education to all students.

Superintendent Dr. Bary Habrock states, "Being named a "Best Community for Music Education" is a tremendous honor, as it recognizes our dedicated educators and administrators, talented students, engaged parents, and our supportive School Board. Elkhorn Public Schools has a rich history of music education and remains committed to music education and all arts going forward."

Research indicates that music education continues to benefit educational/cognitive and social skills for children who make music. This award recognizes that Elkhorn Public Schools is leading the way by providing those learning opportunities to students.





2019-2020 Back to School Information

New Student Registration

New Student Registration will be held at all EPS schools on Wednesday, July 31 and Thursday, August 1 from 8:00am until 4:00pm. Please call your school office the week prior to set up a new student registration appointment.

To confirm your school assignment and review the list of required registration documentation, visit <https://www.elkhornweb.org> or call the EPS Administration Office at (402) 289-2579.

Middle and High Schools Back-to-School 101

Back-to-School 101 for all EPS middle schools and high schools will be as follows:

Elkhorn High School:

Monday, August 5 from 12:00-6:00pm

Elkhorn South High School:

Monday, August 5 from 12:00-6:00pm

Middle Schools South of Dodge Street:

Wednesday, August 7 from 1:00-7:00pm

Middle Schools North of Dodge Street:

Thursday, August 8 from 1:00-7:00pm



Elementary Open House and Curriculum Nights

For the 2019-2020 school year, there will be no Back-to-School 101 for EPS elementary buildings. Information about student picture day will be shared by building principals in early August.

EPS elementaries will host an Open House in conjunction with Curriculum Night for students to meet their teacher, drop off supplies, and receive information about involvement opportunities at their school. Information regarding specific days and times for elementary Open House and Curriculum nights can be found at <https://www.elkhornweb.org>.

First Day of School Schedule

The first day of school for all EPS schools will be Thursday, August 15, 2019. The schedule for each grade level is below.

Elementary (Grades K-5)

8:15am - 3:06pm

Middle (Grades 6-8)

8:10am - 3:20pm

High School (Grades 9-12)

Grade 9: 8:10am-11:45am

Grades 10-12: 12:00pm - 3:20pm

Buses will run regular schedules for elementary and middle school students. High school routes will run on the regular schedule, with an additional drop off when freshman are dismissed at 11:45am. Students in grades 10-12 will need to make alternate arrangements to arrive at school by 12:00pm.

District Notices

CHILD FIND

The Elkhorn Public School District requests your help in locating children and youth with disabilities who are eligible to benefit from Special Education or 504 accommodations. If you know of a youth who is a resident of the District who may have a disability and is not receiving needed services, please contact Kendra Schneider, Director of Special Education, 20650 Glenn St. Elkhorn, NE, 68022 or by calling (402) 289-2579.

DISTRICT WEBSITE

The Elkhorn Public Schools' website contains current, valuable information for staff, students, parents, District homeowners and other interested parties. The site, found at <https://www.elkhornweb.org>, includes the annual report, board of education information, general district information, maps, and calendars.

For additional information about the district or any other public school district in Nebraska, visit the Nebraska Department of Education website at www.education.ne.gov.

BUSINESSES AND ORGANIZATIONS

The distribution of individual handouts to students is not permitted. In place of this practice, the District publishes the Elkhorn Express and distributes it to all K-8 students ten times throughout the school year. The Elkhorn Express features advertisements, and notices that are of interest to families.

For additional information, please contact Penny Overmann at penny.overmannpub@cox.net.



HIGHLIGHTS

NONPROFIT ORG
U.S. POSTAGE
PAID
PERMIT NO. 8
ELKHORN, NE

The Elkhorn Public Schools does not discriminate on the basis of race, color, national origin, marital status, age or disability in admission or access to, or treatment of employment, in its programs and activities.

CONTACTS

Enrollment Information/Building Use

Contact Building Principal

Elkhorn High School

Dan Radicia 402-289-4239

Elkhorn South High School

Mark Kalvoda 402-289-0616

Elkhorn Middle School

Deb Garrison..... 402-289-2428

Elkhorn Grandview Middle School

Mike Tomjack 402-289-9399

Elkhorn Ridge Middle School

Tanner Schutte 402-334-9302

Elkhorn Valley View Middle School

Chad Soupir 402-289-0362

Arbor View Elementary

Troy Sidders..... 402-289-1007

Blue Sage Elementary

Amy Christ..... 402-332-0125

Fire Ridge Elementary

Deb Knutson 402-289-0735

Hillrise Elementary

Montessa Munoz 402-289-2602

Manchester Elementary

Sarah Addink..... 402-289-2590

Sagewood Elementary

Jan Peterson 402-289-9078

Skyline Elementary

Sarah Yandell..... 402-289-3433

Spring Ridge Elementary

Laurinda Petersen..... 402-637-0204

West Bay Elementary

Jen Coltvet..... 402-289-9045

West Dodge Station Elementary

Pam Wahl..... 402-289-2773

Westridge Elementary

Ryan Broshar 402-289-2559

Elkhorn Public Schools Foundation

Stacey Falk 402-289-1727

Before/After School Kids Campus

Amy Whorlow..... 402-289-1727

Activities/Athletics

Roger Ortmeier (ESHS).. 402-289-0616

Mark King (EHS) 402-289-4239

Student Services

Anne Doerr..... 402-289-2579

Special Education

Dr. Kendra Schneider ... 402-289-2579

Personnel/Teacher Vacancies

Dr. Don Pechous 402-289-2579

Britnie Cox..... 402-289-2579

Buildings/Grounds and Purchasing

Ryan Lindquist..... 402-289-2579

Curriculum, Assessment & Technology

Dr. Cindy Gray 402-289-2579

Angie Wright..... 402-289-2579

Dr. Jadi Miller 402-289-2579

Kevin Gross 402-289-2579

District Information/Board of Education

Dr. Bary Habrock..... 402-289-2579



ELKHORN
PUBLIC SCHOOLS

General District Information

20650 Glenn Street

Elkhorn, NE 68022

Phone: 402-289-2579

Fax: 402-289-2585

<https://www.elkhornweb.org/>

TDD/Voice All Schools

The EPS Highlights are distributed twice annually for the sole purpose of informing district residents of the programs, procedures, and progress of the school district. We encourage you to read the Highlights, participate in activities in your neighborhood school, and offer feedback on information you would like to see included in the Highlights. Questions or comments can be directed to the Administration Office by calling (402) 289-2579 or emailing kperchal@epsne.org.